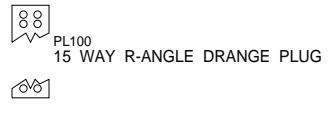
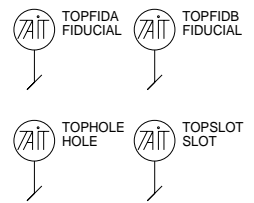
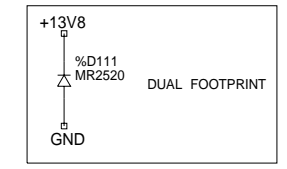


DGND & GND ARE JOINED THROUGH R617 ON SHEET 6



PRODUCT INDICATORS					
-10	-20	-30	-15	-25	-35
T88110 2K2	T88120 2K2	T88130 2K2	T88115 2K2	T88125 2K2	T88135 2K2

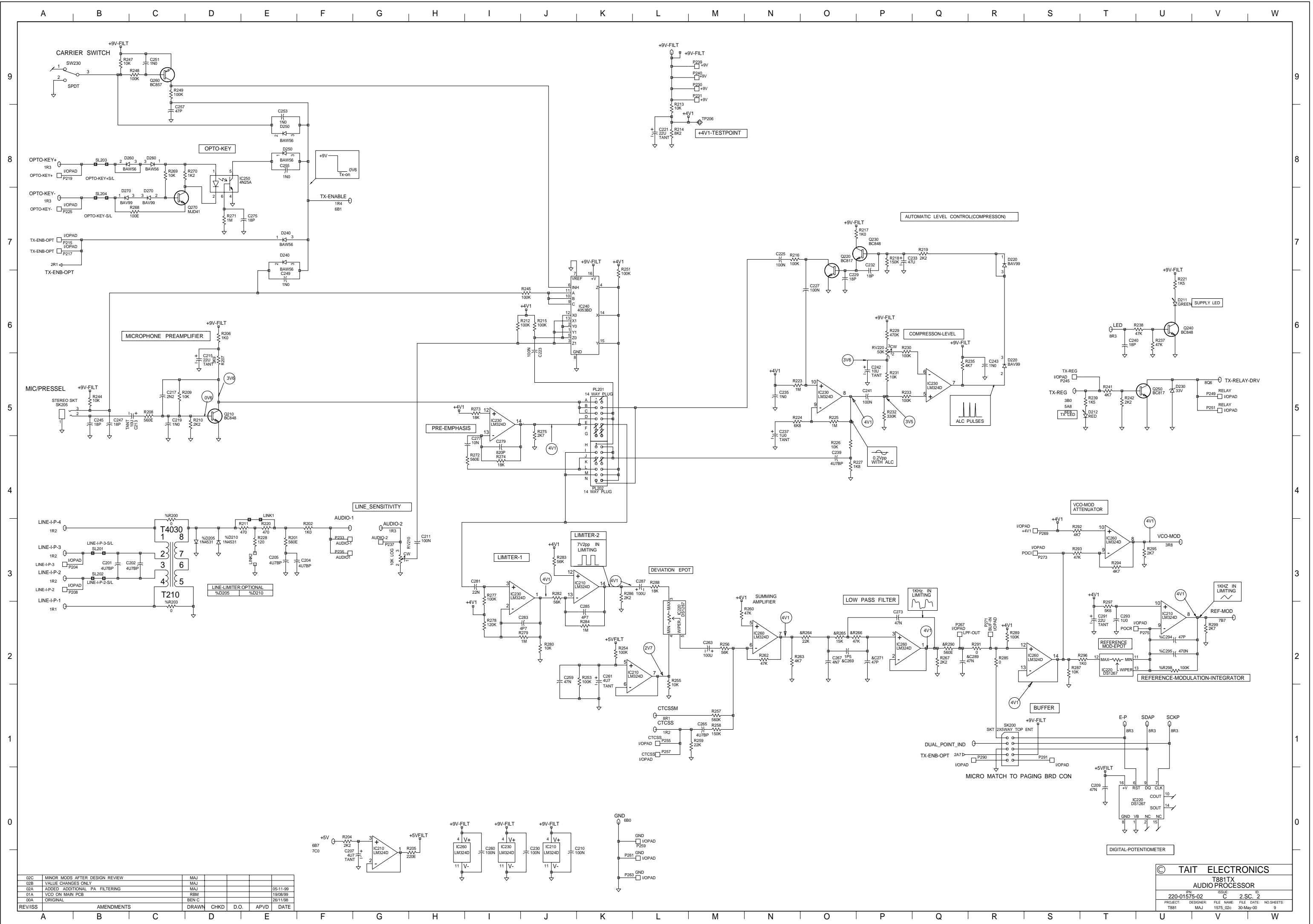


REV/ISS	AMENDMENTS	DRAWN	CHKD	D.O.	APVD	DATE
02C	MINOR MODS AFTER DESIGN REVIEW	MAJ				
02B	VALUE CHANGES ONLY	MAJ				
02A	ADDED ADDITIONAL PA FILTERING	MAJ				05-11-99
01A	VCO ON MAIN PCB	RBM				19/08/99
00A	ORIGINAL	BEN C				26/11/98

© TAIT ELECTRONICS
T881TX

IPN: 220-01575-02 ISSUE: C ID: 2.S.C. 1

PROJECT: T881 DESIGNER: MAJ FILE NAME: 1575_02c FILE DATE: 30-May-00 NO.SHEETS: 9



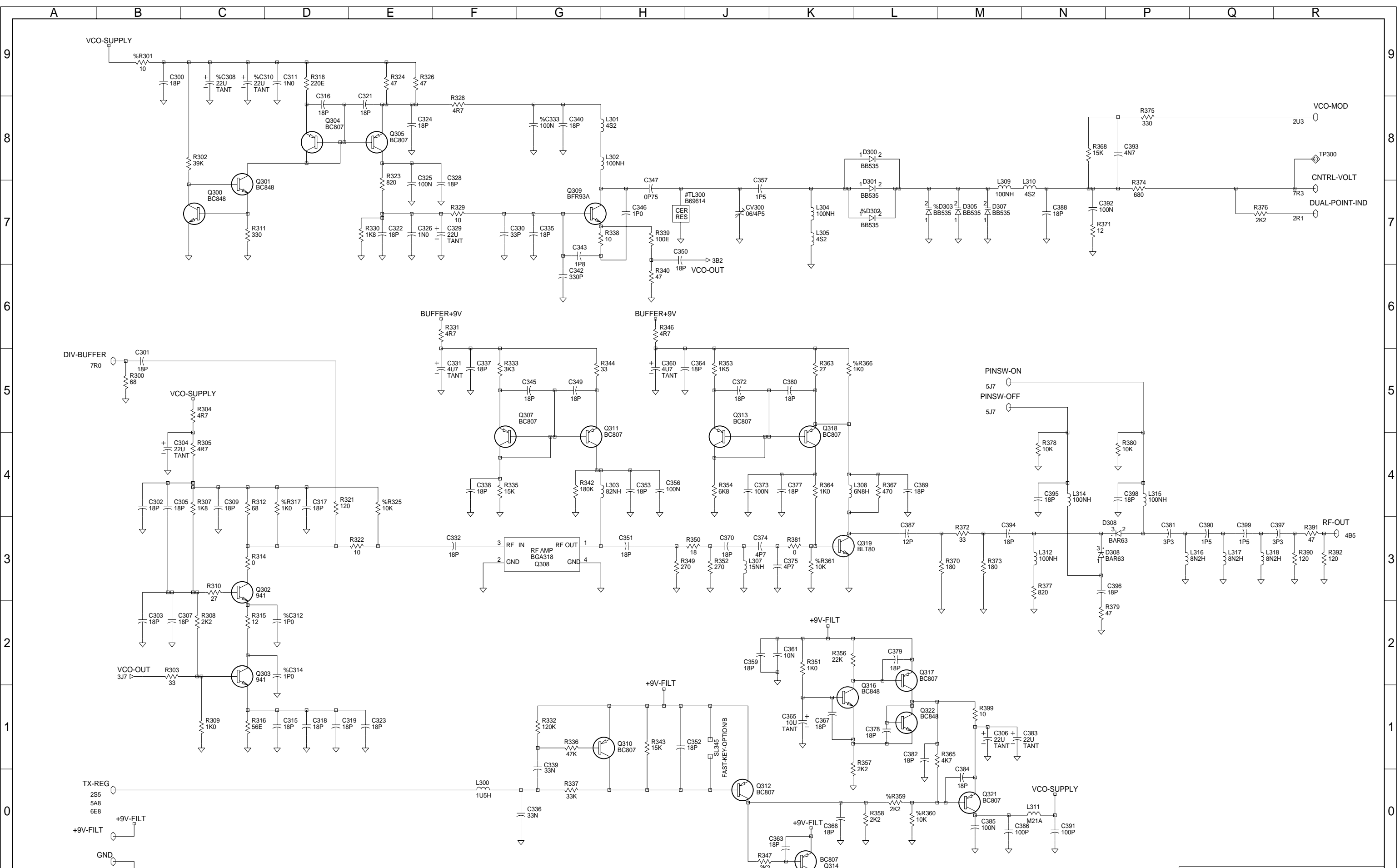
02C	MINOR MODS AFTER DESIGN REVIEW	MAJ			
02B	VALUE CHANGES ONLY	MAJ			
02A	ADDED ADDITIONAL PA FILTERING	MAJ			05-11-99
01A	VCO ON MAIN PCB	BSM			19/08/99
00A	ORIGINAL	BEN C			26/11/98
REV/ISS	AMENDMENTS	DRAWN	CHKD	D.O.	APVD

© TAIT ELECTRONICS

T881TX
AUDIO PROCESSOR

220-01575-02 C 2-SC-2

PROJECT: T881 DESIGNER: MAJ FILE NAME: 1575_02c FILE DATE: 30-May-00 NO SHEETS: 9



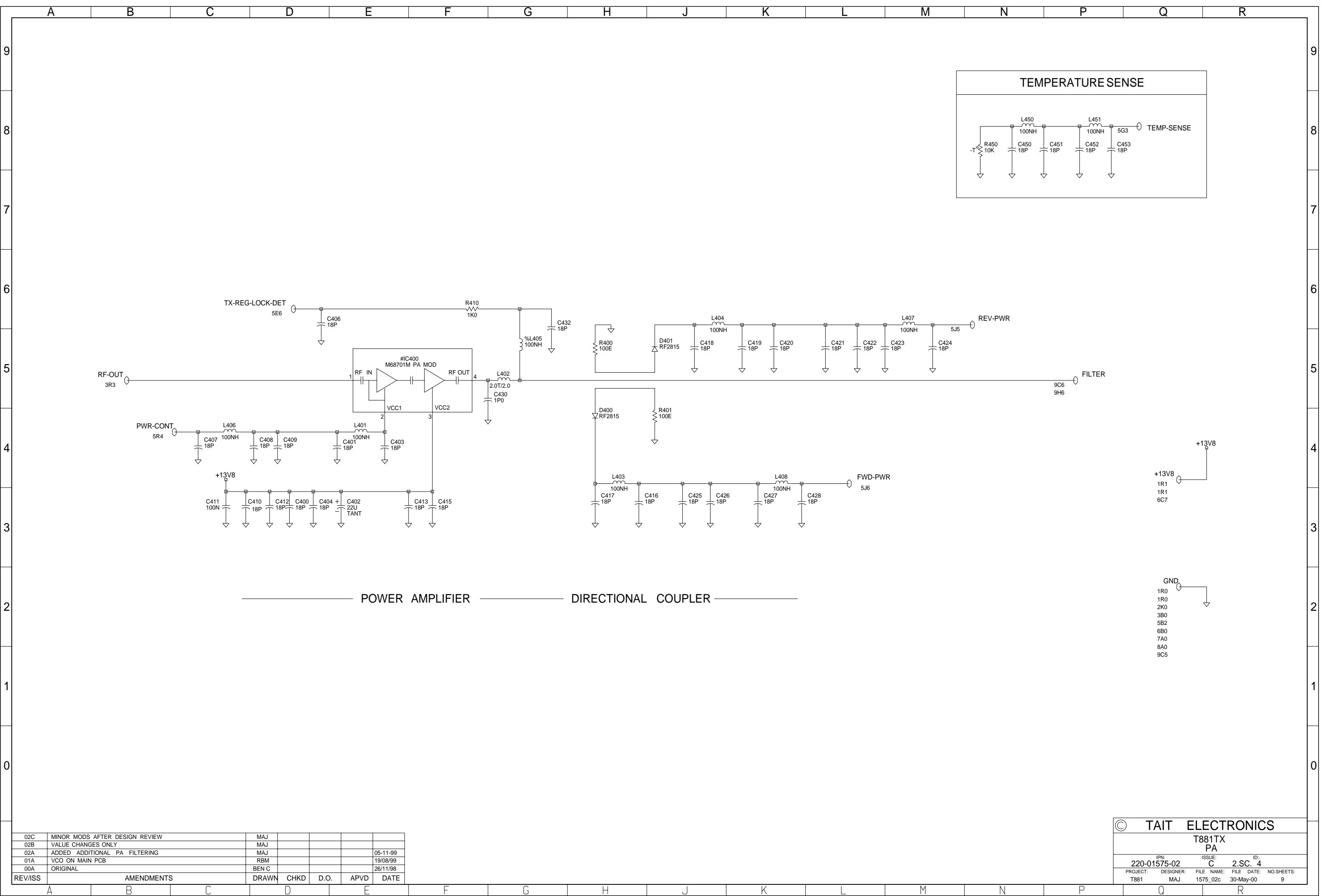
02C	MINOR MODS AFTER DESIGN REVIEW	MAJ				
02B	VALUE CHANGES ONLY	MAJ				
02A	ADDED ADDITIONAL PA FILTERING	MAJ				05-11-99
01A	VCO ON MAIN PCB	RBM				19/08/99
00A	ORIGINAL	BEN C				26/11/98
REV/ISS	AMENDMENTS	DRAWN	CHKD	D.O.	APVD	DATE

© TAIT ELECTRONICS

T881TX
VCO

IPN: 220-01575-02 ISSUE: C ID: 2.S.C. 3

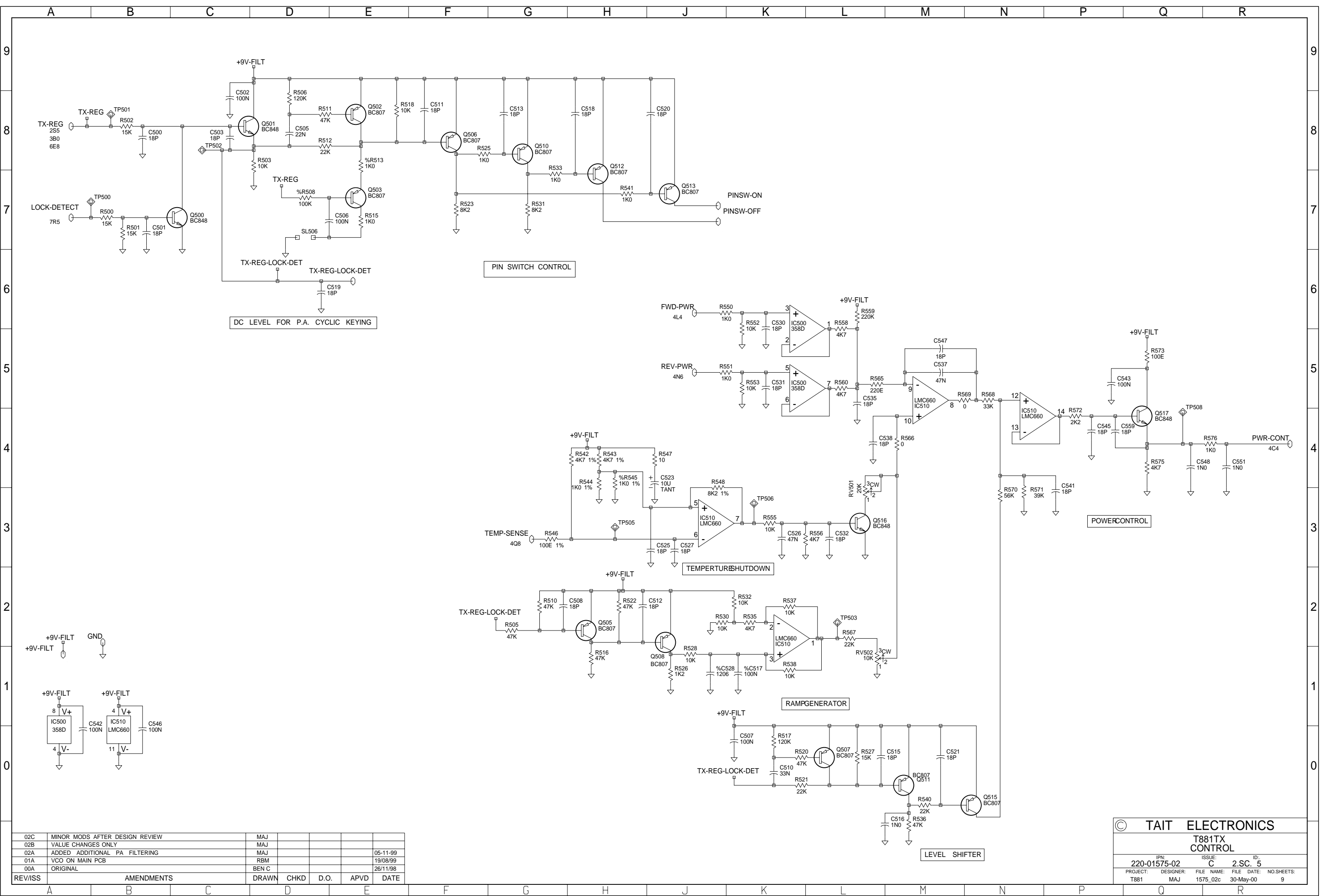
PROJECT: T881 DESIGNER: MAJ FILE NAME: 1575_02c FILE DATE: 30-May-00 NO.SHEETS: 9



————— POWER AMPLIFIER ————— DIRECTIONAL COUPLER —————

02C	MINOR MODS AFTER DESIGN REVIEW	MAJ				
02B	VALUE CHANGES ONLY	MAJ				
02A	ADDED ADDITIONAL PA FILTERING	MAJ				05-11-99
01A	VCO ON MAIN PCB	RBM				19/08/99
00A	ORIGINAL	BEN C				26/11/98
REV/ISS	AMENDMENTS	DRAWN	CHKD	D.O.	APVD	DATE

© TAIT ELECTRONICS			
T881TX PA			
IPN:	ISSUE:	FILE NAME:	ID:
220-01575-02	C	1575_02c	2.SC. 4
PROJECT:	DESIGNER:	FILE DATE:	NO.SHEETS:
T881	MAJ	30-May-00	9



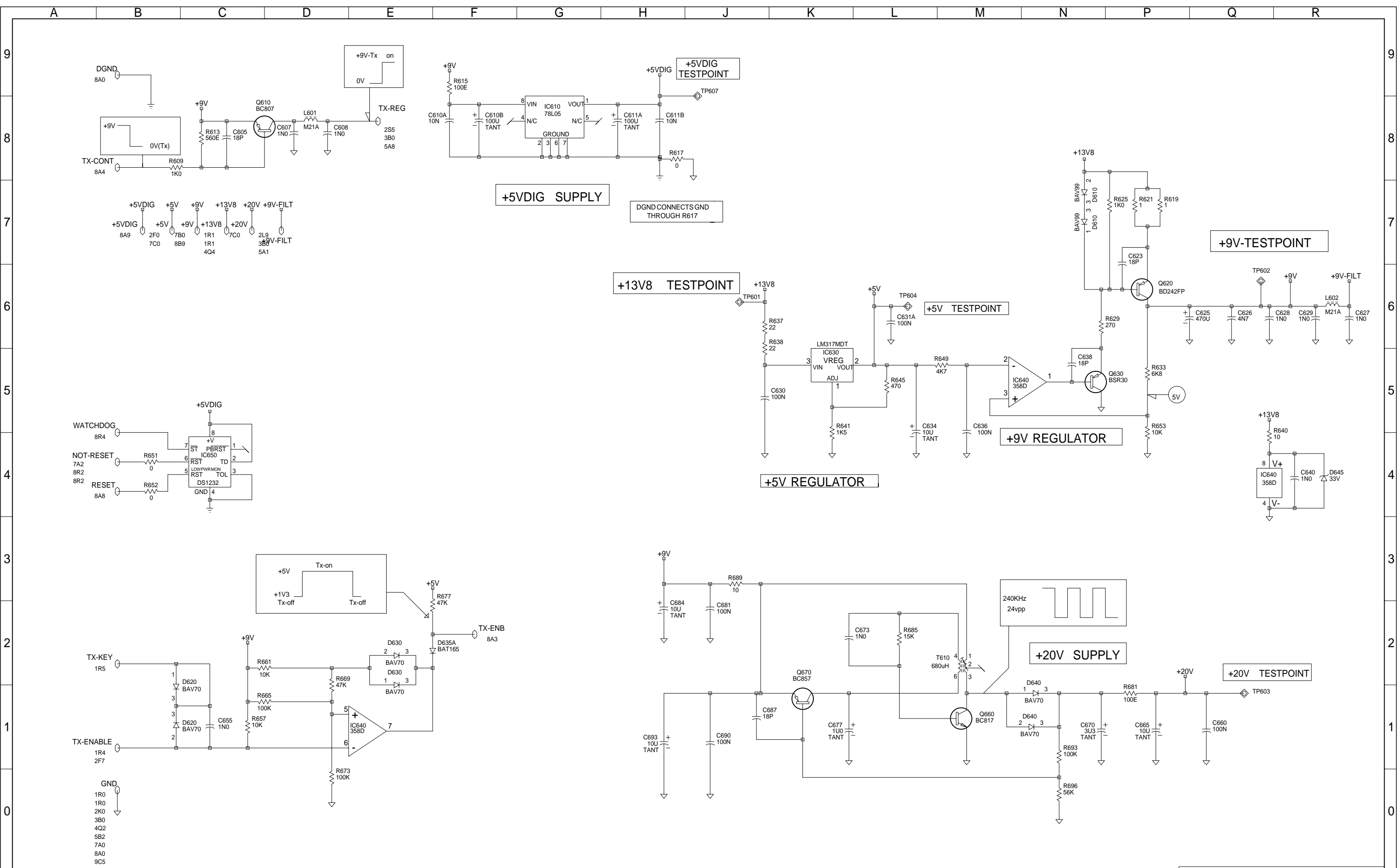
02C	MINOR MODS AFTER DESIGN REVIEW	MAJ				
02B	VALUE CHANGES ONLY	MAJ				
02A	ADDED ADDITIONAL PA FILTERING	MAJ			05-11-99	
01A	VCO ON MAIN PCB	RBM			19/08/99	
00A	ORIGINAL	BEN C			26/11/98	
REV/ISS	AMENDMENTS	DRAWN	CHKD	D.O.	APVD	DATE

© TAIT ELECTRONICS

T881TX CONTROL

IPN: 220-01575-02 ISSUE: C ID: 2.S.C. 5

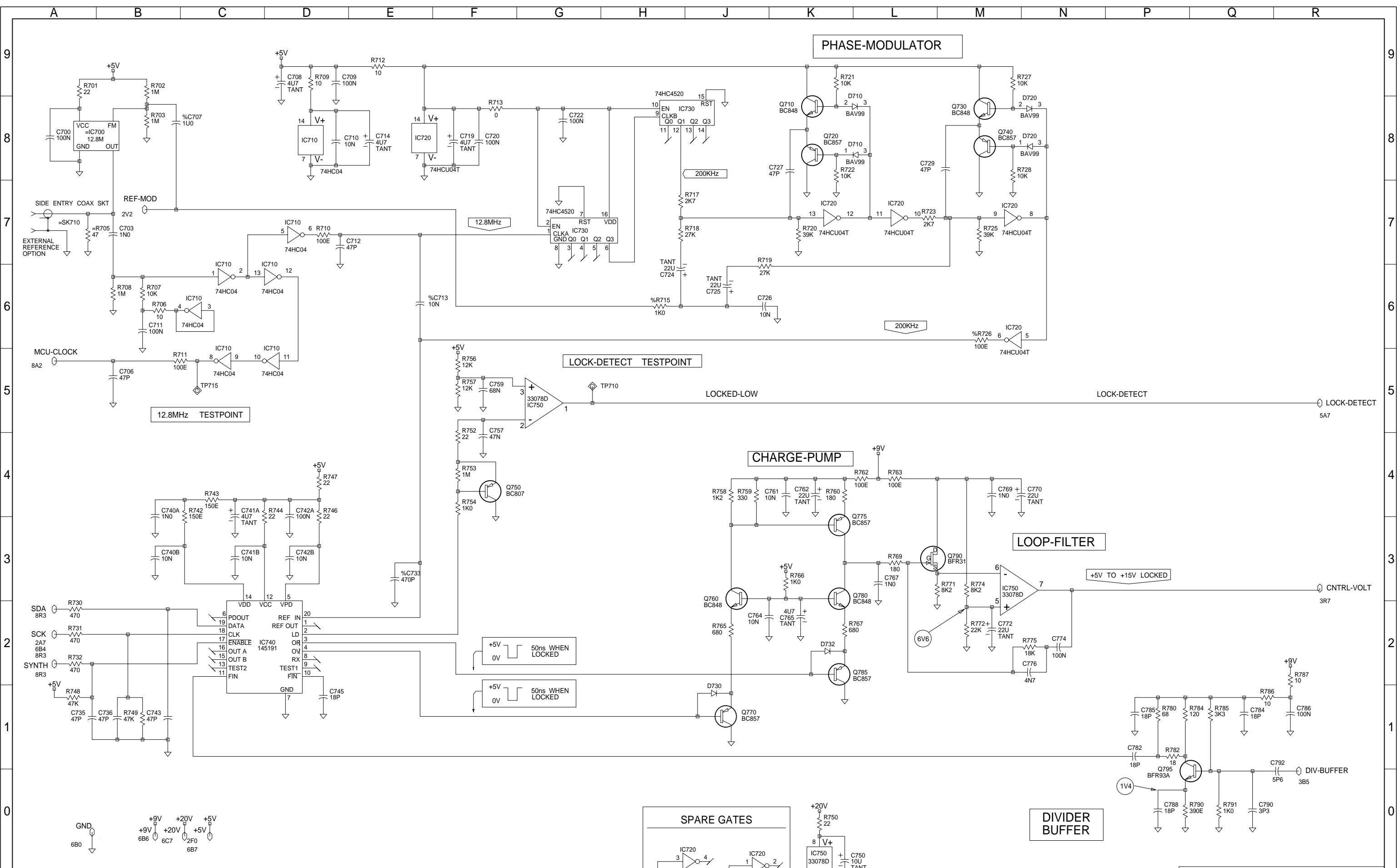
PROJECT: T881 DESIGNER: MAJ FILE NAME: 1575_02c FILE DATE: 30-May-00 NO.SHEETS: 9



Q2C	MINOR MODS AFTER DESIGN REVIEW	MAJ				
Q2B	VALUE CHANGES ONLY	MAJ				
REV/ISS	AMENDMENTS	DRAWN	CHKD	D.O.	APVD	DATE

© TAIT ELECTRONICS
T881TX

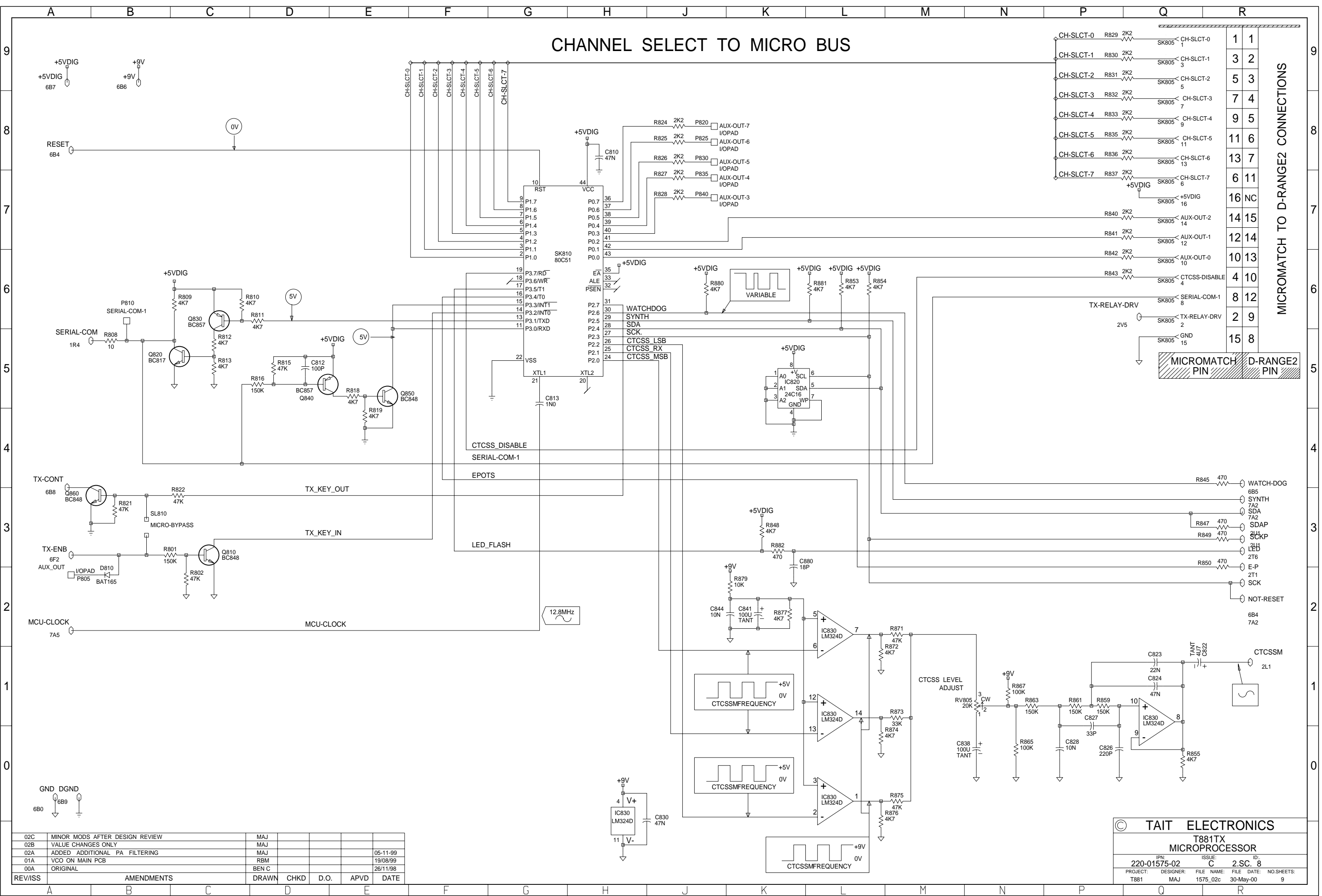
IPN:	ISSUE:	ID:
220-01575-02	C	2.S.C. 6
PROJECT:	DESIGNER:	FILE NAME:
T881	MAJ	1575_02c
		FILE DATE:
		30-May-00
		NO.SHEETS:
		9



02C	MINOR MODS AFTER DESIGN REVIEW	MAJ			
02B	VALUE CHANGES ONLY	MAJ			
02A	ADDED ADDITIONAL PA FILTERING	MAJ			05-11-99
01A	VCO ON MAIN PCB	RBM			19/08/99
00A	ORIGINAL	BEN C			26/11/98
REV/ISS	AMENDMENTS	DRAWN	CHKD	D.O.	APVD DATE

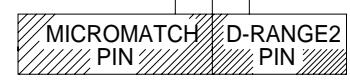
© TAIT ELECTRONICS			
T881TX SYNTHESISER			
IPN: 220-01575-02	ISSUE: C	ID: 2.S.C. 7	
PROJECT: T881	DESIGNER: MAJ	FILE NAME: 1575_02c	NO. SHEETS: 9
		FILE DATE: 30-May-00	

CHANNEL SELECT TO MICRO BUS



Channel Select	Resistor	Microprocessor Pin	Microprocessor Pin
CH-SLCT-0	R829 2K2	SK805	CH-SLCT-0
CH-SLCT-1	R830 2K2	SK805	CH-SLCT-1
CH-SLCT-2	R831 2K2	SK805	CH-SLCT-2
CH-SLCT-3	R832 2K2	SK805	CH-SLCT-3
CH-SLCT-4	R833 2K2	SK805	CH-SLCT-4
CH-SLCT-5	R835 2K2	SK805	CH-SLCT-5
CH-SLCT-6	R836 2K2	SK805	CH-SLCT-6
CH-SLCT-7	R837 2K2	SK805	CH-SLCT-7
		SK805	+5VDIG
		SK805	16
	R840 2K2	SK805	AUX-OUT-2
	R841 2K2	SK805	AUX-OUT-1
	R842 2K2	SK805	AUX-OUT-0
	R843 2K2	SK805	CTCSS-DISABLE
		SK805	4
		SK805	SERIAL-COM-1
		SK805	8
		SK805	TX-RELAY-DRV
		SK805	2
		SK805	GND
		SK805	15
		SK805	8
		SK805	12
		SK805	2
		SK805	9
		SK805	15
		SK805	8

MICROMATCH TO D-RANGE2 CONNECTIONS



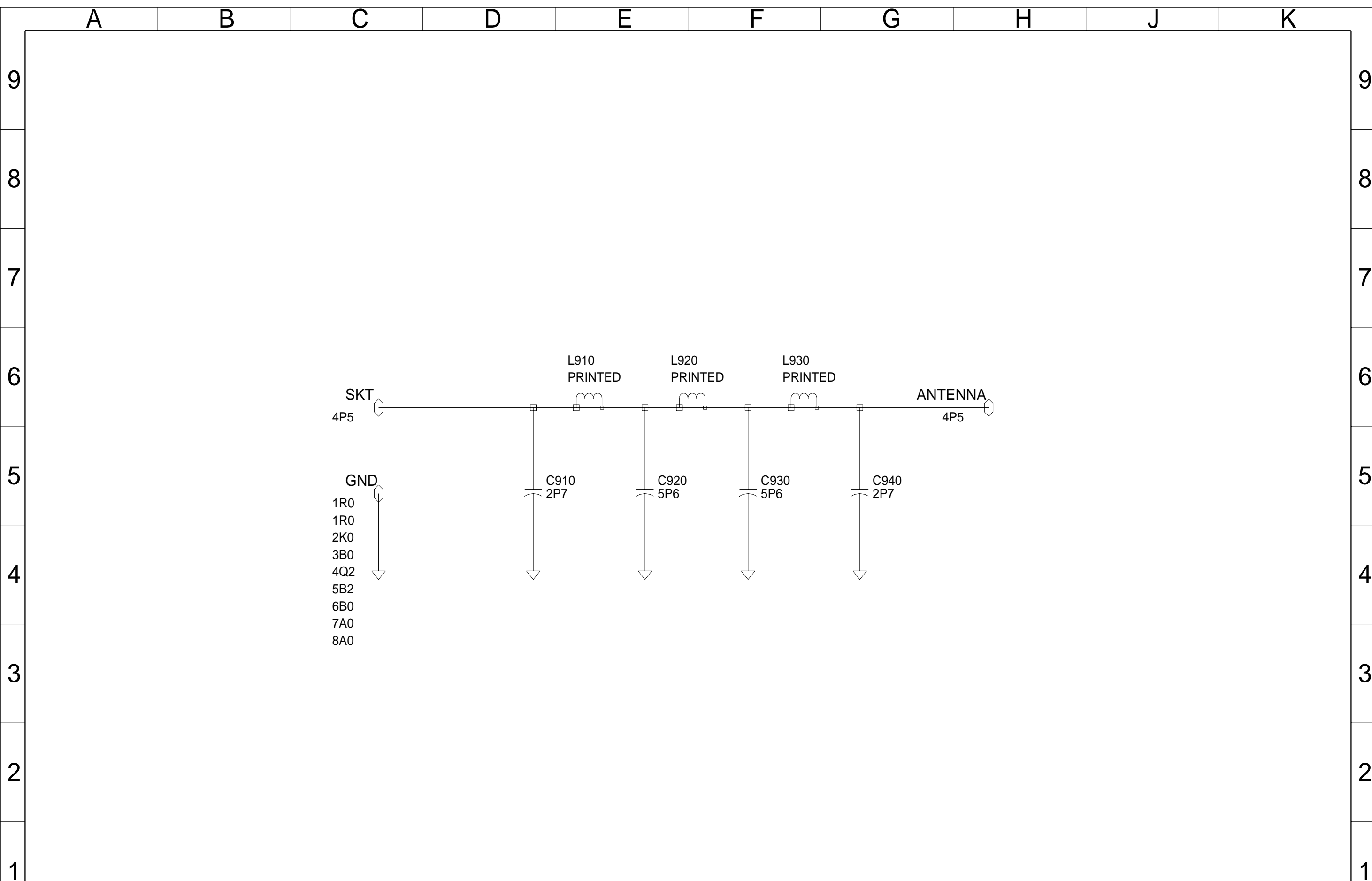
REV/ISS	AMENDMENTS	DRAWN	CHKD	D.O.	APVD	DATE
02C	MINOR MODS AFTER DESIGN REVIEW	MAJ				
02B	VALUE CHANGES ONLY	MAJ				
02A	ADDED ADDITIONAL PA FILTERING	MAJ				05-11-99
01A	VCO ON MAIN PCB	RBM				19/08/99
00A	ORIGINAL	BEN C				26/11/98

© TAIT ELECTRONICS

T881TX MICROPROCESSOR

IPN: 220-01575-02 ISSUE: C ID: 2.S.C. 8

PROJECT: T881 DESIGNER: MAJ FILE NAME: 1575_02c FILE DATE: 30-May-00 NO.SHEETS: 9



02C	MINOR MODS AFTER DESIGN REVIEW	MAJ				
02B	VALUE CHANGES ONLY	MAJ				
02A	ADDED ADDITIONAL PA FILTERING	MAJ				05-11-99
01A	VCO ON MAIN PCB	RBM				19/08/99
00A	ORIGINAL	BEN C				26/11/98
REV/ISS	AMENDMENTS	DRAWN	CHKD	D.O.	APVD	DATE

© TAIT ELECTRONICS

T881TX
HARMONIC FILTER

IPN: 220-01575-02 ISSUE: C ID: 2.SC. 9

PROJECT: T881 DESIGNER: MAJ FILE NAME: 1575_02c FILE DATE: 30-May-00 NO.SHEETS: 9

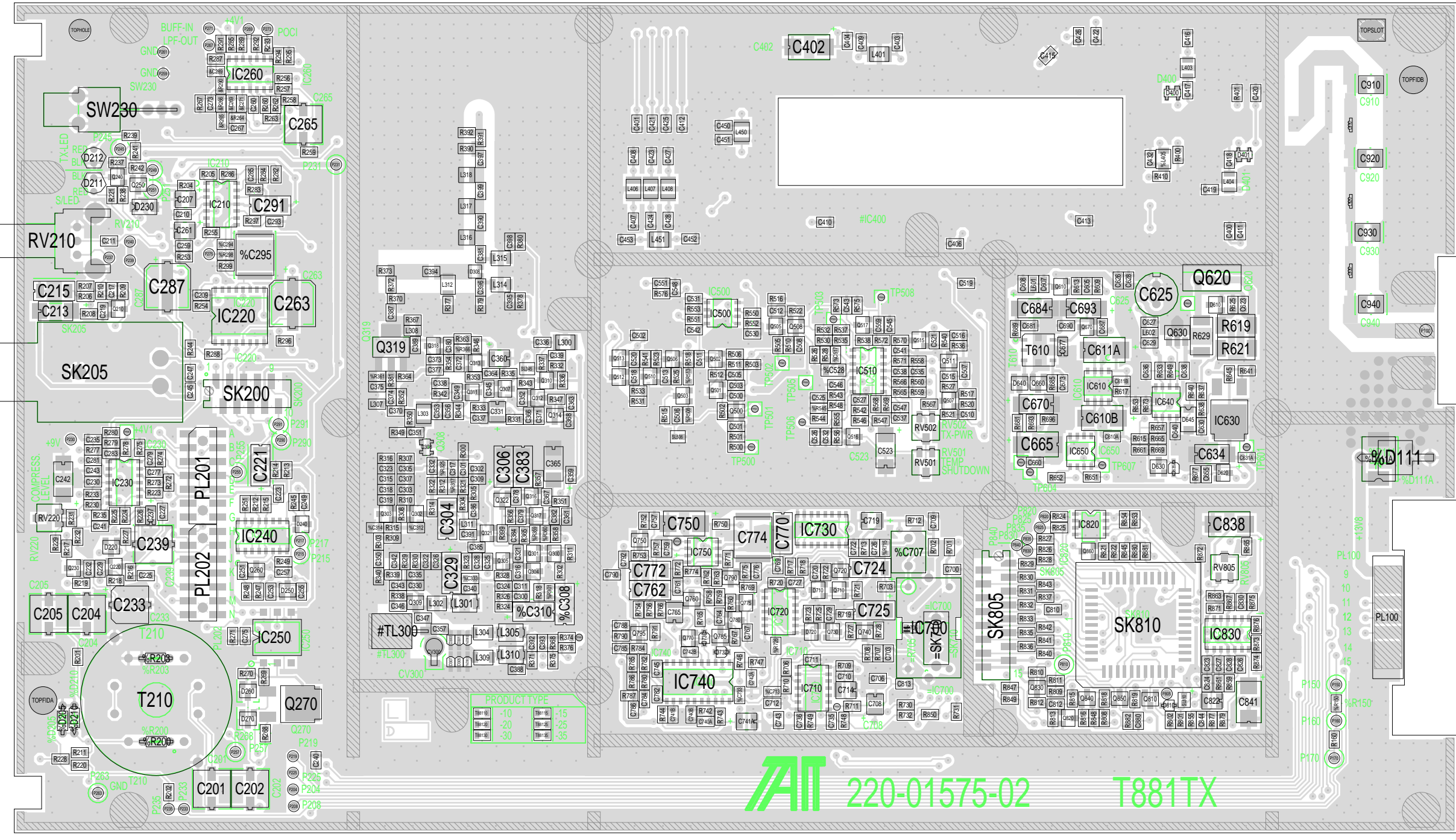
9
8
7
6
5
4
3
2
1
0

9
8
7
6
5
4
3
2
1
0

A B C D E F G H J K

A B C D E F G H J K

9
8
7
6
5
4
3
2
1



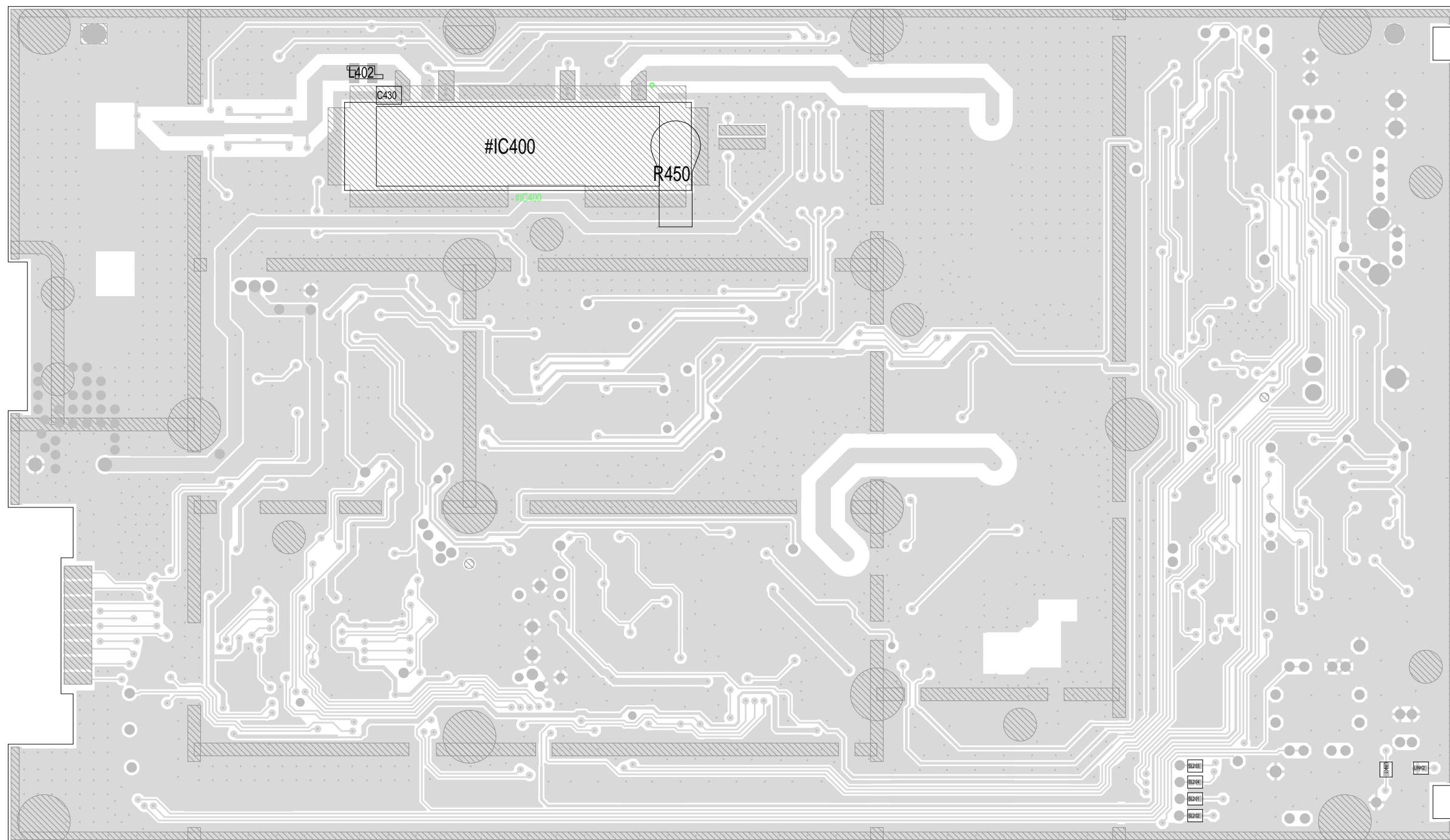
PRODUCT TYPE	
10	15
20	25
30	35

AIT 220-01575-02 T881TX

A B C D E F G H J K L M N P Q

TAIT ELECTRONICS IPN: 220-01575-02 ISS: -02 ID: 1.TA DATE: 29 May 2000
T881TX PCB LAYOUT - TOP SIDE

Scale: 1:2.1 ; Rotation: 0 degrees



Q P N M L K J H G F E D C B A

9
8
7
6
5
4
3
2
1

TAIT ELECTRONICS	IPN: 220-01575-02	ISS: -02	ID: 2.BA	DATE: 29 May 2000
T881TX PCB LAYOUT - BOTTOM SIDE				

Scale: 1.2:1 ; Rotation: 0 degrees